


PEL1-63

RESIDUAL CURRENT CIRCUIT BREAKER



Technical Data

Mode	Electromagnetic
Type	A, AC
Rated current I_n	16, 25, 32, 40, 63, 80A
Poles	2P 4P
Rated voltage U_e	230V / 400V
Insulation voltage U_i	500V
Rated frequency	50/60Hz
Rated residual operating current ($I_{\Delta n}$)	30, 100, 300mA
Rated residual making and breaking capacity I_m	500($I_n=25-40A$) 630($I_n=63A$)
Short-circuit current $I_{nc}=I_{\Delta c}$	10000A
SCPD fuse	 10000
Operating time	$\leq 0.1S$
Rated impulse withstand voltage(1.2/50) U_{imp}	4000V
Dielectric test voltage at and ind.Freq.for 1min	2.5kV
Electrical and Mechanical life	10000

Residual Current Circuit Breaker Tripping Current Range

Type	Tripping current I_{Δ}/A	
AC	$0.5I_{\Delta n} < I_{\Delta} < I_{\Delta n}$	
A	Lagging Angle	$I_{\Delta n} > 0.01A$
	0°	$0.35I_{\Delta n} \leq I_{\Delta} \leq 1.4I_{\Delta n}$
	90°	$0.25I_{\Delta n} \leq I_{\Delta} \leq 1.4I_{\Delta n}$
	135°	$0.11I_{\Delta n} \leq I_{\Delta} \leq 1.4I_{\Delta n}$
		$I_{\Delta n} \leq 0.01A$
		$0.35I_{\Delta n} \leq I_{\Delta} \leq 2I_{\Delta n}$
		$0.25I_{\Delta n} \leq I_{\Delta} \leq 2I_{\Delta n}$
		$0.11I_{\Delta n} \leq I_{\Delta} \leq 2I_{\Delta n}$

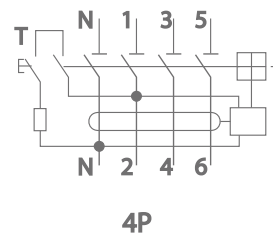
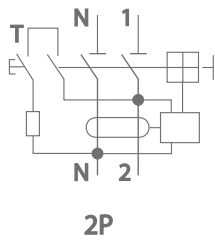
PEL1-63

RESIDUAL CURRENT CIRCUIT BREAKER

Installation

Fault current indicator	YES
Protection degree	IP20
Ambient temperature (with daily average $\leq 35^{\circ}\text{C}$)	$-5 \sim +40^{\circ}\text{C}$
Storage temperature	$-25 \sim +70^{\circ}\text{C}$
Terminal connection type	Cable/U-type busbar/Pin -type busbar
Terminal size top/bottom for cable	25mm ² 18-3
Terminal size top/bottom for cable	25mm ² 18-3
Tightening torque	3.0Nm 22
Mounting	On DIN rail FN 60715 (35mm) by means of fast clip device
Connection	Top and bottom

The wiring diagram



Overall and mounting dimensioned chart

